

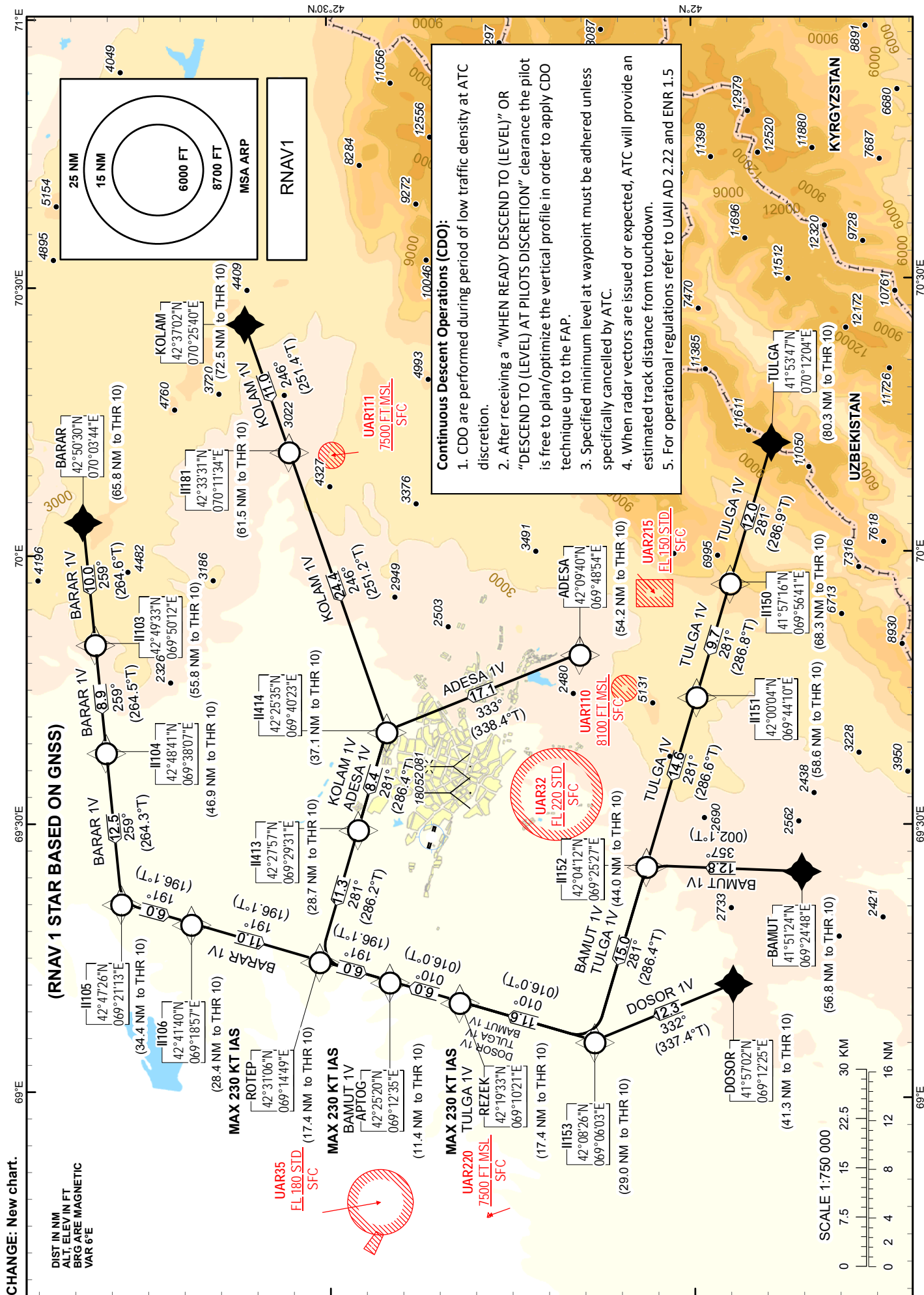
STANDARD ARRIVAL
CHART - INSTRUMENT
(STAR) - ICAO

TRANSITION ALTITUDE
10000 FT

SHYMKENT TOWER 125.9
SHYMKENT ATIS (EN) 119.2
SHYMKENT ATIS (RU) 126.6

ADESA 1V, BAMUT 1V,
BARAR 1V, DOSOR 1V,
KOLAM 1V, TULGA 1V.

SHYMKENT
RWY 10



TABULAR DESCRIPTION

ADESA 1V											
Serial Number	Path Descriptor	Waypoint Identifier	Fly - over	Course °M(°T)	Magnetic Variation(°)	Distance NM	Turn Direction	Altitude FT	Speed KT	VPA (°)	Navigation Specification
10	IF	ADESA	-	-	+5.5	-	-	+FL120 -FL200	-	-	RNAV 1
20	TF	II414	-	333(338.4)	+5.5	17.1	R	+8500 -FL140	-	-1.1	RNAV 1
30	TF	II413	-	281(286.4)	+5.5	8.4	L	+7000 -FL120	-	-2.8	RNAV 1
40	TF	ROTEP	-	281(286.2)	+5.5	11.3	-	+5200 -7300	-230	-2.9	RNAV 1
50	TF	APTOG	-	191(196.1)	+5.5	6.0	L	+4200 -5200	-	-2.4	RNAV 1

BAMUT 1V											
Serial Number	Path Descriptor	Waypoint Identifier	Fly - over	Course °M(°T)	Magnetic Variation(°)	Distance NM	Turn Direction	Altitude FT	Speed KT	VPA (°)	Navigation Specification
10	IF	BAMUT	-	-	+5.5	-	-	+FL130 -FL210	-	-	RNAV 1
20	TF	II152	-	357(002.1)	+5.5	12.8	L	+10000 -FL170	-	-	RNAV 1
30	TF	II153	-	281(286.4)	+5.5	15.0	L	+7000 -FL120	-	-1.9	RNAV 1
80	TF	REZEK	-	010(016.0)	+5.5	11.6	R	+5200 -7300	-	-	RNAV 1
90	TF	APTOG	-	010(016.0)	+5.5	6.0	-	+4200 -5200	-230	-2.8	RNAV 1

BARAR 1V											
Serial Number	Path Descriptor	Waypoint Identifier	Fly - over	Course °M(°T)	Magnetic Variation(°)	Distance NM	Turn Direction	Altitude FT	Speed KT	VPA (°)	Navigation Specification
10	IF	BARAR	-	-	+5.5	-	-	+FL150 -FL240	-	-	RNAV 1
20	TF	II103	-	259(264.6)	+5.5	10.0	R	+FL130 -FL210	-	-	RNAV 1
30	TF	II104	-	259(264.5)	+5.5	8.9	-	+10000 -FL180	-	-2.1	RNAV 1
40	TF	II105	-	259(264.3)	+5.5	12.5	-	+7900 -FL130	-	-0.8	RNAV 1
50	TF	II106	-	191(196.1)	+5.5	6.0	L	+6900 -FL120	-	0	RNAV 1
60	TF	ROTEP	-	191(196.1)	+5.5	11.0	-	+5200 -7300	-230	-2.6	RNAV 1
70	TF	APTOG	-	191(196.1)	+5.5	6.0	-	+4200 -5200	-	-2.4	RNAV 1

DOSOR 1V											
Serial Number	Path Descriptor	Waypoint Identifier	Fly - over	Course °M(°T)	Magnetic Variation(°)	Distance NM	Turn Direction	Altitude FT	Speed KT	VPA (°)	Navigation Specification
10	IF	DOSOR	-	-	+5.5	-	-	+9400 -FL160	-	-	RNAV 1
20	TF	II153	-	332(337.4)	+5.5	12.3	L	+7000 -FL120	-	-2.3	RNAV 1
30	TF	REZEK	-	010(016.0)	+5.5	11.6	R	+5200 -7300	-	-2	RNAV 1
40	TF	APTOG	-	010(016.0)	+5.5	6.0	-	+4200 -5200	-	-2.2	RNAV 1

KOLAM 1V											
Serial Number	Path Descriptor	Waypoint Identifier	Fly - over	Course °M(°T)	Magnetic Variation(°)	Distance NM	Turn Direction	Altitude FT	Speed KT	VPA (°)	Navigation Specification
10	IF	KOLAM	-	-	+5.5	-	-	+FL160 -FL270	-	-	RNAV 1
20	TF	II181	-	246(251.4)	+5.5	11.0	R	+FL140 -FL230	-	-0.9	RNAV 1
30	TF	II414	-	246(251.2)	+5.5	24.4	-	+8500 -FL140	-	-0.4	RNAV 1
40	TF	II413	-	281(286.4)	+5.5	8.4	R	+7000 -FL120	-	-2.8	RNAV 1
50	TF	ROTEP	-	281(286.2)	+5.5	11.3	-	+5200 -7300	-230	-2.9	RNAV 1
60	TF	APTOG	-	191(196.1)	+5.5	6.0	L	+4200 -5200	-	-2.4	RNAV 1

TULGA 1M											
Serial Number	Path Descriptor	Waypoint Identifier	Fly - over	Course °M(°T)	Magnetic Variation(°)	Distance NM	Turn Direction	Altitude FT	Speed KT	VPA (°)	Navigation Specification
10	IF	TULGA	-	-	+5.5	-	-	+FL180 -FL290	-	-	RNAV 1
20	TF	II150	-	281(286.9)	+5.5	12.0	-	+FL150 -FL250	-	-0.8	RNAV 1
30	TF	II151	-	281(286.8)	+5.5	9.7	-	+FL130 -FL220	-	-1.9	RNAV 1
40	TF	II152	-	281(286.6)	+5.5	14.6	-	+10000 -FL170	-	-1.3	RNAV 1
50	TF	II153	-	281(286.4)	+5.5	15.0	-	+7000 -FL120	-	-1.9	RNAV 1
60	TF	REZEK	-	010(016.0)	+5.5	11.6	R	+5200 -7300	-230	-2	RNAV 1
70	TF	APTOG	-	010(016.0)	+5.5	6.0	-	+4200 -5200	-	-3.1	RNAV 1

WAYPOINT LIST

WPT	COORD		WPT	COORD	
ADESA	420940.00N	0694854.00E	II151	420003.70N	0694410.43E
APTOG	422519.51N	0691234.86E	II152	420412.16N	0692526.61E
BAMUT	415124.00N	0692448.00E	II153	420825.64N	0690603.02E
BARAR	425030.00N	0700344.00E	II181	423330.51N	0701133.62E
DOSOR	415702.00N	0691225.00E	II413	422756.58N	0692930.83E
II103	424933.14N	0695012.33E	II414	422535.40N	0694022.65E
II104	424840.93N	0693806.67E	KOLAM	423702.00N	0702540.00E
II105	424725.82N	0692113.01E	REZEK	421933.39N	0691020.68E
II106	424139.90N	0691857.25E	ROTEP	423105.57N	0691449.44E
II150	415715.78N	0695640.86E	TULGA	415347.00N	0701204.00E